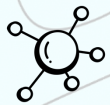


Theory of change for Appalachia Funders Network

The Appalachia Funders Network (AFN) unites impact-minded public, private, and philanthropic funders with other investors. No matter their size, location, or specialization, each of our members has ideas and solutions that have potential to be borrowed or adapted.

Shared learning and collaborative action
beyond geographic, issue, and sector-based boundaries



Active network members

- gain a better understanding of regional needs
- build supportive and collaborative relationships
- share insights and work through questions with trusted peers



Member organizations apply regional insights to their own investments and work



Centering place-based organizations
as the most effective way to deploy capital

We envision a future
in which Appalachia is supported by a vibrant, collaborative, and responsive philanthropic sector



Active network members deepen relationships and define solutions with practitioners

Member organizations consider aligning resources to support place-based strategies and practitioners



Practitioners have access to more resources and increased capacity to accelerate regional systems change



Active network members contribute to collective knowledge about practices that are shown to be effective



Member organizations elevate evidence and narratives that attract investment into the region



National funders have clearer entry points and partners to advance regional systems change



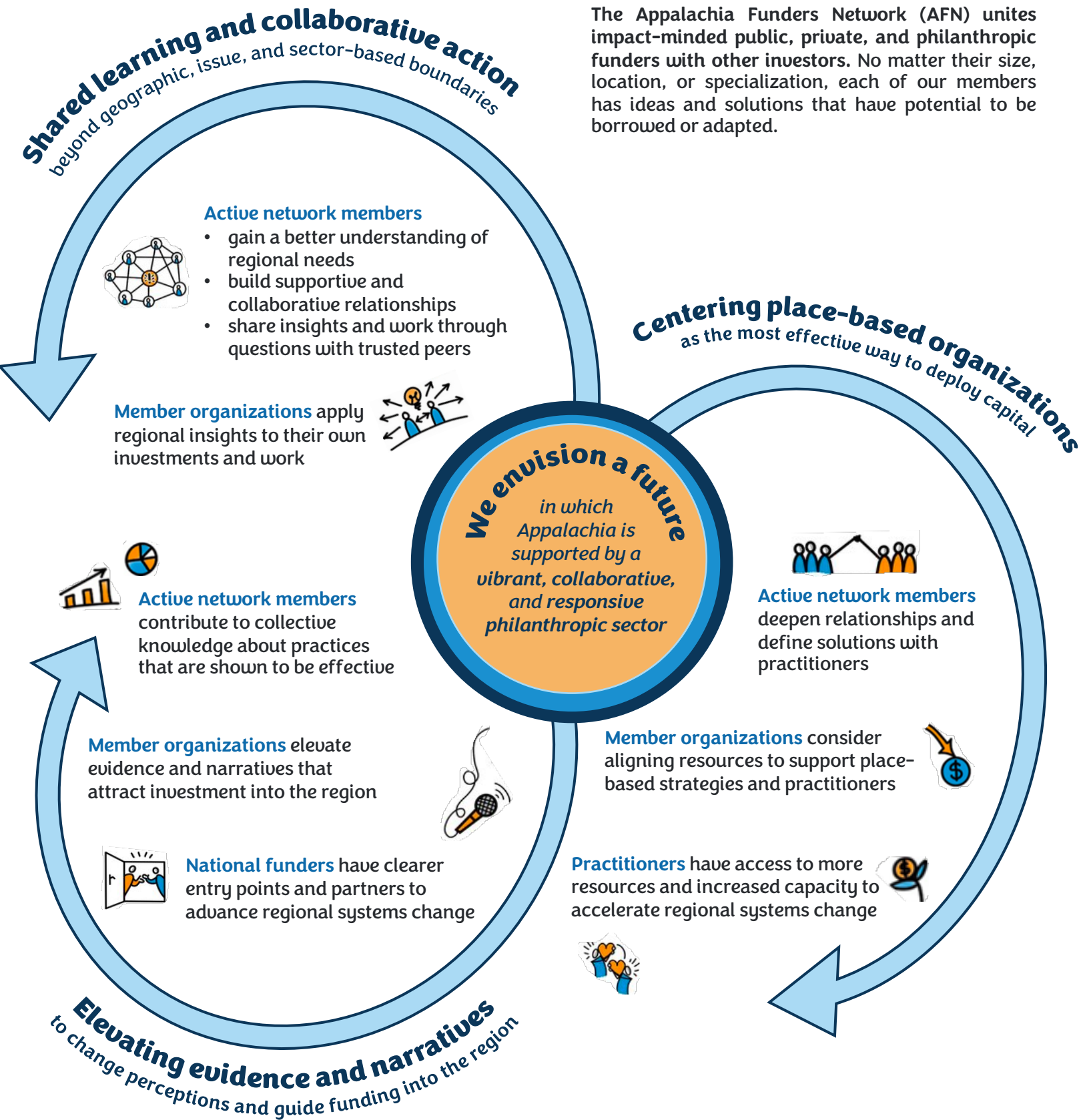
Elevating evidence and narratives
to change perceptions and guide funding into the region

Our values are foundational to all that we do:

Belonging | Collaboration | Self-determination | Local knowledge

Theory of change for Appalachia Funders Network

The Appalachia Funders Network (AFN) unites impact-minded public, private, and philanthropic funders with other investors. No matter their size, location, or specialization, each of our members has ideas and solutions that have potential to be borrowed or adapted.



Our values are foundational to all that we do:

Belonging | Collaboration | Self-determination | Local knowledge