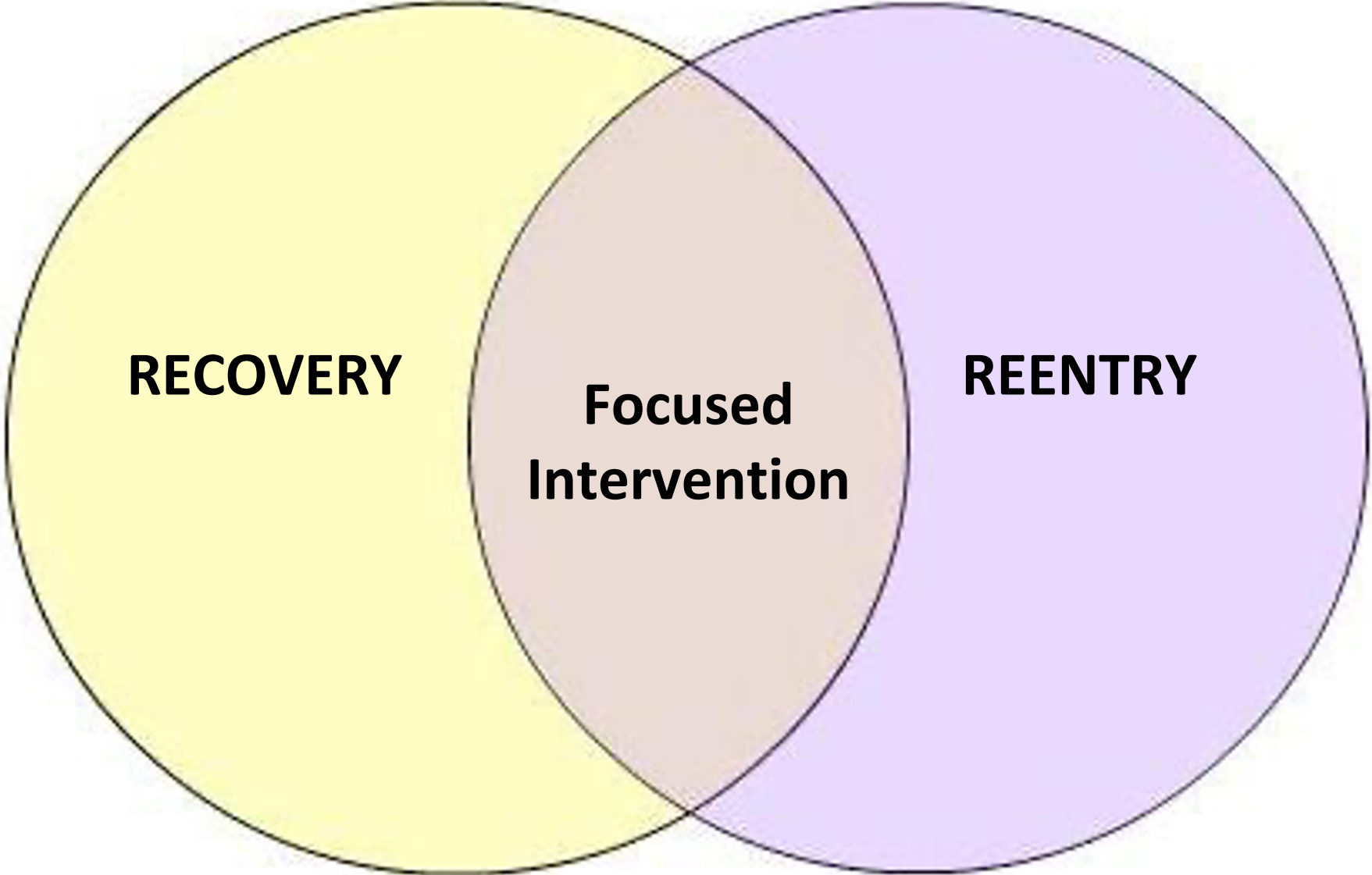




# Substance Use Disorder: Reentry Strategies

**SEPARATE YET CONNECTED**





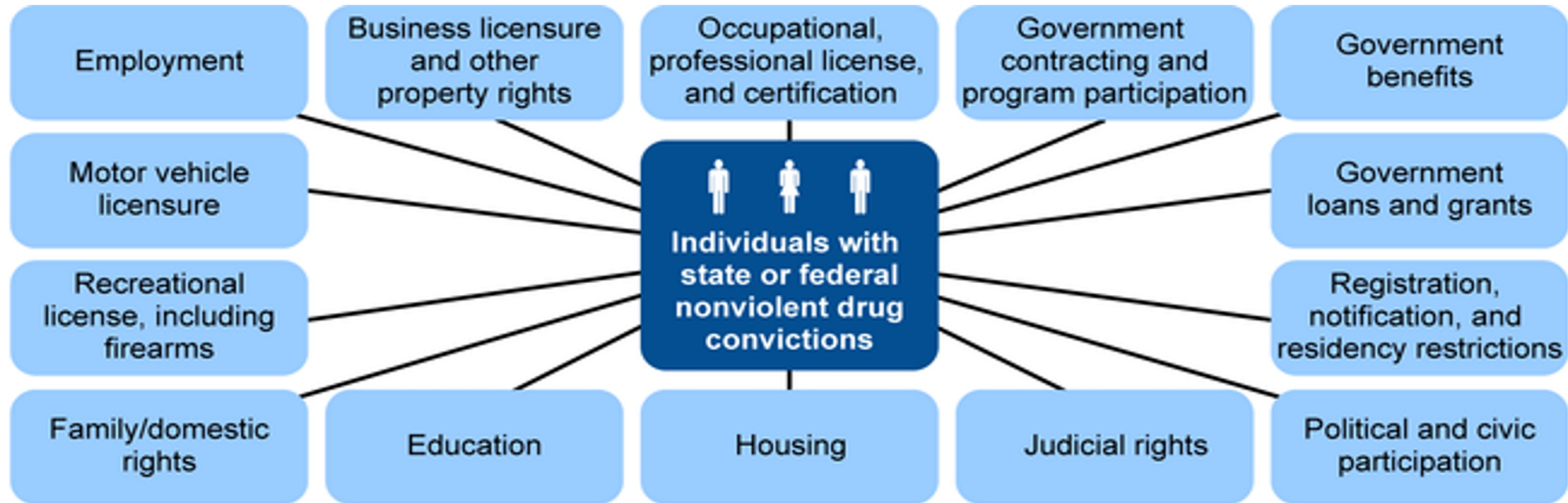
**RESTORE EMPOWER & ATTAIN CONNECTIONS WITH HOPE**

# Building Bridges to a Better Community!

The REACH Initiative  
in West Virginia in partnership with the  
Benedum Foundation

Bill Woodrum [bwoodrum@benedum.org](mailto:bwoodrum@benedum.org)  
Kim Barber Tieman  
[ktieman@benedum.org](mailto:ktieman@benedum.org)

Bev Sharp  
[bsharp@wvreentry.org](mailto:bsharp@wvreentry.org)



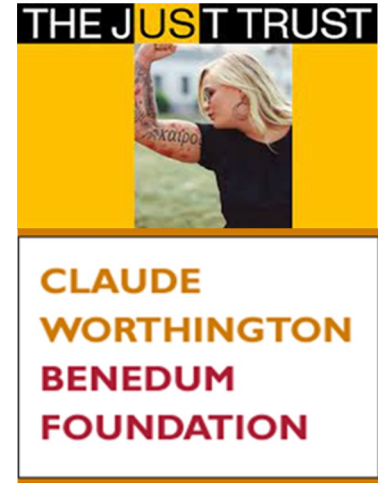
Source: GAO analysis of the American Bar Association's National Inventory of the Collateral Consequences of Conviction (NICCC). | GAO-17-691

In West Virginia, there are currently over 851 Collateral Consequences resulting from a felony conviction and if you include Federal Consequences there are 1,900!

# REACH Helps Individuals Identify Personal Barriers

Funding started in January 2020 under the West Virginia Council of Churches, then in April 2022 under The REACH Initiative when they became a 501c3

- Basic Needs: Food, Clothing, Housing
- Healthcare / Mental Health
- Transportation
- Lack of Relationships
- Lack of Financial Resources
- Lack of Education / Training
- Criminal Record
- Childcare/Custody/Support
- Substance Abuse
- Lack of Self Confidence
- Unrealistic Expectations



Bev Sharp, *Founder and Executive Director of the REACH Initiative & WV Reentry Councils*

- Working in partnership with the Day Report Center covering Logan, Lincoln, Mingo and Boone counties
- Located in the Community Development Center in Logan
- Assisting clients with preparing for employment, training, education, developing skillsets, finding not just employment but careers earning a living wage



# We Build Effective Collaboration with these Relevant Community Partners!





Creating Opportunities  
for Recovery  
Employment (CORE)



**Hatfield McCoy Trails**  
**Buffalo Mountain**  
**Devil Anse**  
**Rock House**

Why Start Your Trail Riding Adventure in Williamson?  
ALL of Williamson is Trail Rider Friendly  
Park your trailer and drive your off-road vehicle on ANY of our city streets! We have our very own trail-rider parking lot, so there's no need to drive the extra 7 Miles to the Buffalo Mtn. Trailhead when you can start right off the Highway!  
Address: 111 West 3rd Ave, Williamson, WV 25668  
**OVER 500+ Miles of Direct Trail Access**  
(3 Hatfield McCoy Systems PLUS  
Marlin & Pike Counties in Kentucky!)

Closest Trail System of ANY HMT To A Major 4-Lane Highway  
(Trail #10 is literally 12 FEET from US-119)

Diverse Lodging Accommodations Available!  
(Cabins, Hotels, Lodges, and More can be found in the immediate area! Individuals, Families, or Groups; we've got 'ya' covered)

Largest Selection of Restaurants in ANY HMT Trail City  
(Sports Bars, BBQ, Mexican, Lunch/dine Specialty, National Chain Restaurants and More!)

Most Historic Trail System of ANY HMT System  
(The Hatfield/McCoy Fossil took place along the Tug Fork River between Williamson and Matewan.)

The Original/Oldest HMT System (Opened October 2000)

The MOST Single-Track Riding of ANY HMT System  
(If you ride a Dirt Bike, Buffalo Mountain is a MUST ride!)

The GREATEST diversity of scenery on ANY HMT System  
(Old Mines, Mountain-top Views, Narrow Valleys, Creek Crossings, and More!)

**WILLIAMSON, WEST VIRGINIA**  
GATEWAY TO THE HATFIELD MCCOY TRAILS AND BEYOND!

www.visitcoalcountry.org



**The Key is Forming Partnerships**





# INspire: recovery to career

## The Importance of Partnership

- Jointly funded with ARC, the INspire program has grown to cover 17 counties through partnership with three regional COGs
- The program uses career readiness as a primary means to develop and sustain recovery capital
- Lived experience in Reentry & Recovery surrounds new participants in hope, support, & accountability
- Employer relationships and knowledge of vocational supports provide pathways to high-quality careers





## First at Blue Ridge jail diversion

### Working from the Inside-Out

- First at Blue Ridge is a residential therapeutic community focused on recovery from Substance Use Disorder
- In 2021, they tailored their programming to fit the needs of individuals in Buncombe Co. detention with qualifying diagnoses, allowing them to await trial in treatment instead of jail
- Critical to the process is the infrastructure of willing judges, attorneys, jail administrators, and case managers within the justice system
- In 2022, 60 participated, with 2/3 successfully completing the program and moving on to long-term community support & employment





## Voices of Affrilachia

# Reentry & Recovery

### Culturally-Competent Care

- Co-funded with NC DHHS, VOA serves 7 counties in WNC with BIPOC led recovery & reentry supports, and works to expand the pipeline of BIPOC professionals into the field
- 87% job retention rate among participants
- 6% recidivism through 8 months
- All but 7 of the first 117 clients maintained safe, stable housing
- They've trained 43 new Peer Support Specialists, and 13 Community Health Workers





# Grant Funding in Action: Improving Access to Care for Reentering People in Rural Communities

*April 11, 2023*

Anna Swanson, Federal Office of Rural Health Policy (FORHP)  
Health Resources and Services Administration (HRSA)

**Vision: Healthy Communities, Healthy People**



# Health Resources and Services Administration

## Overview



- Supports more than 90 programs that provide health care to people who are geographically isolated, economically or medically challenged



- Over 3,000 awardees, including community and faith-based organizations, colleges and universities, hospitals, state, local, and tribal governments, and private entities



- Every year, HRSA programs serve tens of millions of people, including people with HIV/AIDS, pregnant people and their families, and those otherwise unable to access quality health care

# The Federal Office of Rural Health Policy

Established in Section 711 of the Social Security Act

The Federal Office of Rural Health Policy (FORHP) collaborates with rural communities and partners to support community programs and shape policy that will improve health in rural America.

Cross Agency Collaboration

Works across HRSA, HHS, & several other federal partners to accomplish its goals

Capacity Building

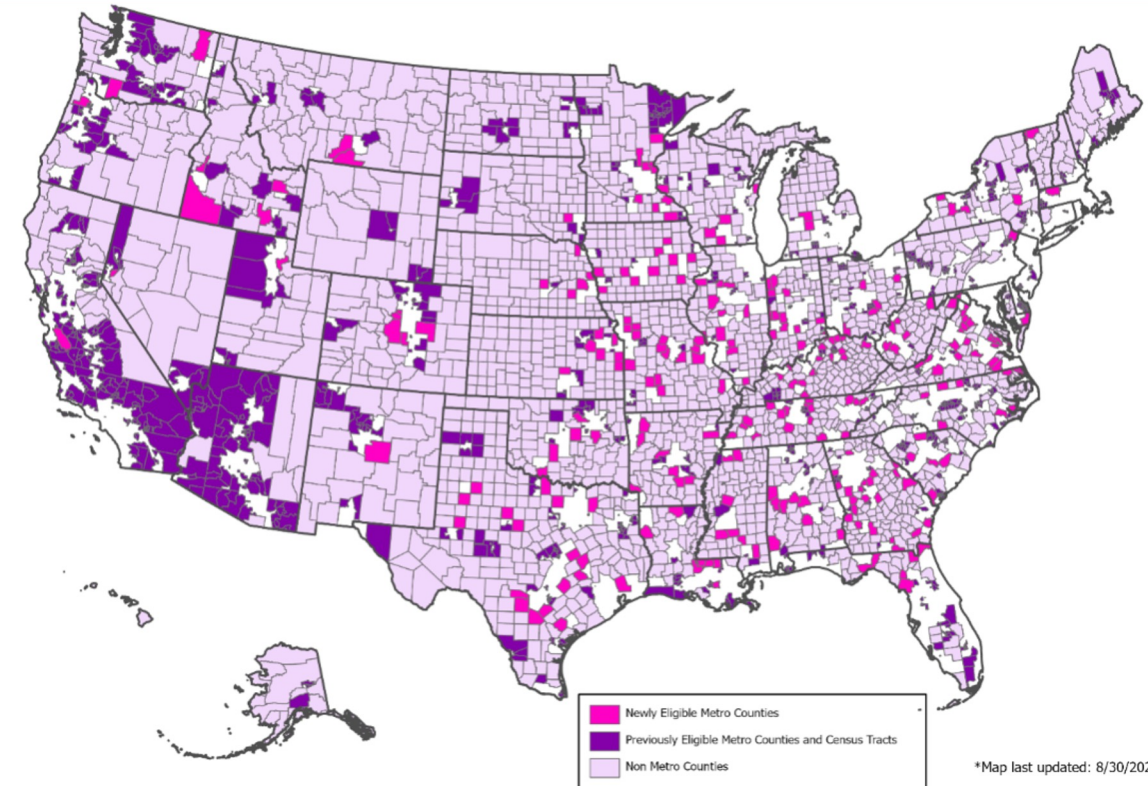
Increases access to health care for people in rural communities through grant programs and public partnerships

Voice for Rural

Advises the HHS Secretary on policy and regulation that affect rural areas



Counties and Census Tracts Eligible for FORHP Funding



# Rural Communities Opioid Response Program (RCORP)

Reducing Opioid Use Disorder (OUD) and Substance Use Disorder (SUD) in Rural Communities

- The [Rural Communities Opioid Response Program](#) is a multi-year \$500+ million initiative launched in FY 2018 that provides direct funding and technical assistance to rural communities to improve access to behavioral health care services, including SUD/OUD prevention, treatment, and recovery.
- Since 2018, FORHP has made RCORP investments across **47 states** and **2 territories**, reaching **1,800+ rural counties**
- In 2022 RCORP awarded **over \$130 million** in **more than 160 grants and cooperative agreements** that will directly support the behavioral health needs of rural communities across the country.

# Innovative RCORP Grantee Examples

## Connecting Individuals to Resources Both During Incarceration and Upon Release

- **Wilson County Substance Abuse Coalition, North Carolina**
  - Leverage grant funding to cover costs associated with needed in-patient or out-patient treatment and increase access to recovery support services such as free quarterly expungement clinics.
- **Metastar, Sauk County, Wisconsin**
  - RCORP funds supported the hiring of a Re-Entry Coordinator (a former parole officer) who sets up appointments and assists individuals in applying for services such as Medication-Assisted Treatment, domestic and sexual violence support, transportation, re-enrolling in Badger Care (Medicaid), and career coaches.
- **St. Claire Medical Center Inc., Kentucky**
  - Established the “First Day Forward Program” which pairs justice involved individuals with a Peer Support professional that creates individualized pre and post-release case plans. The peer has helped individuals obtain identification cards, SNAP benefits, health insurance etc.
- **Shortgrass Community Health Center, Oklahoma**
  - Implementing a [Transitions Clinic Network \(TCN\)](#) program in order to address health care needs for a reentering person’s physical, behavioral, and social determinant health needs. First of its kind in the state of Oklahoma.



# Become a HRSA Grant Reviewer

We are seeking subject matter experts to provide peer, virtual reviews of the agency's grant applications. Grant reviewers are compensated for their time.

REQUIRED SUBJECT MATTER EXPERTISE IN AT LEAST ONE AREA	
Behavioral Health	Maternal and Child Health
Health Workforce Training	Primary Care Delivery
HIV/AIDS	Rural Health
Working with or Member of Underserved Communities	

ADDITIONAL EXPERTISE	
Diversity, Equity, Inclusion, and Accessibility (DEIA)	Lived Experience
Health Equity	Social Determinants of Health

If you are interested in serving as a grant reviewer, you can learn more at

[hrsa.gov/grants/reviewers](https://hrsa.gov/grants/reviewers)

# Connect with HRSA

Learn more about our agency at:

[www.HRSA.gov](http://www.HRSA.gov)

Rural Health Questions? Email: [FORHP@hrsa.gov](mailto:FORHP@hrsa.gov)

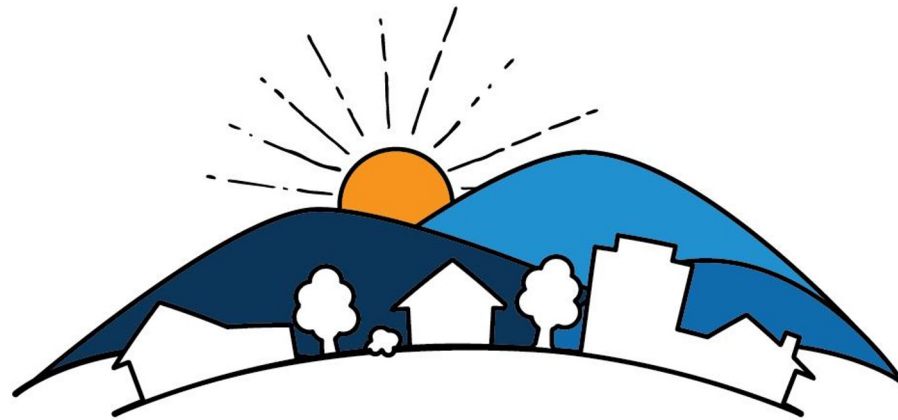
Press Inquiries? Email: [press@hrsa.gov](mailto:press@hrsa.gov)



[Sign up for the HRSA eNews](#)

FOLLOW US:





**APPALACHIA**  
FUNDERS NETWORK